

Retekess

WIRELESS

PEEPHOLE VIDEO DOORBELL



T13D

USER MANUAL

Please make full charge before use it!

This smart battery Wifi Video Doorbell lets you answer the door from

anywhere, whether you're halfway across the world, or just too busy to walk to the door. It lets you see, hear and speak to visitors with ease using your smart phone or tablet.



Note: If any security apps have been installed in your phone/tablet that could affect the "WeCSee" app, please be sure to grant it the appropriate permissions.

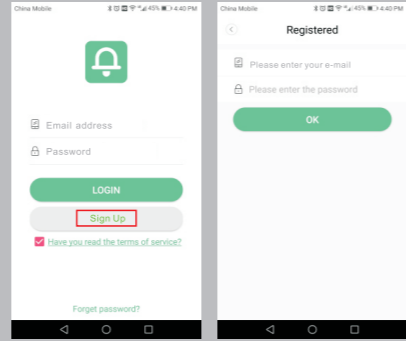
STEP 1 INSTALL APP



NOTE: Search for **WeCSee** on the Google Play/iPhone app stores.

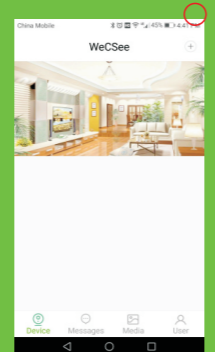
STEP 2 CREATE ACCOUNT

Open the app. Follow the prompts and tap "Sign Up" to create an account. Be sure to allow all permissions requested by the app.



STEP 3 ADD DEVICE

Tap the + to add a new device.



STEP 4 SCAN QR CODE

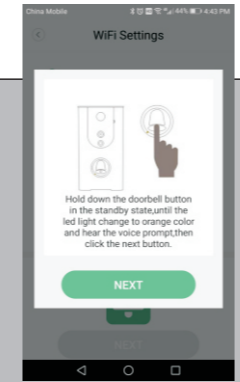
Scan the QR Code located behind the device using the app.



STEP 5 Wi-Fi CONFIGURATION

Note: Make sure your phone/tablet is connected to your Wi-Fi internet prior to configuring the Wi-Fi for the doorbell.

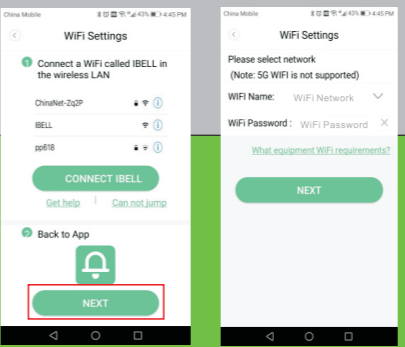
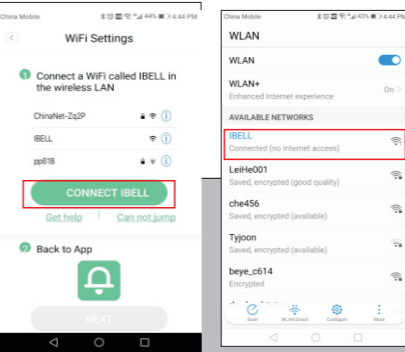
Configure Wi-Fi within 10 feet and in sight of your Wi-Fi router.



STEP 6 Wi-Fi SET UP FOR iOS & ANDROID



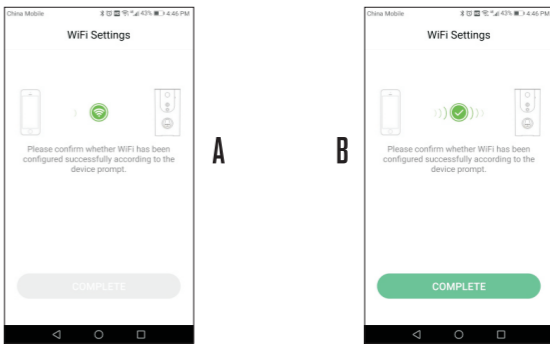
1. Tap "CONNECT IBELL" button and chose network "IBELL" in Wi-Fi settings.
2. Return to the app and tap "Next".
3. Select your Wi-Fi network and input password. Then tap "Next".



TIP: Wi-Fi SET UP NOT WORKING
Try restarting your router.

STEP 7 APP/DEVICE CONNECT

Once the Wi-Fi set up is complete and you hear the voice prompt confirming that the Wi-Fi configuration is successful, tap "Done".



DONE!

DEVICE INSTALLATION
Simply press the doorbell button to start.

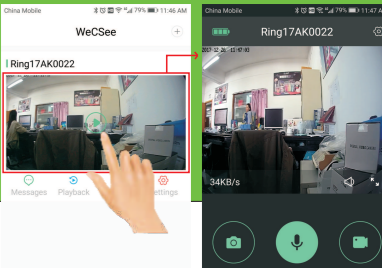


FLIP OVER FOR MORE DETAILS!



AUTOMATICALLY WAKES UP

Tap the picture Quick access via app within 3 seconds.



REMOTE VIEWING NOTIFICATIONS

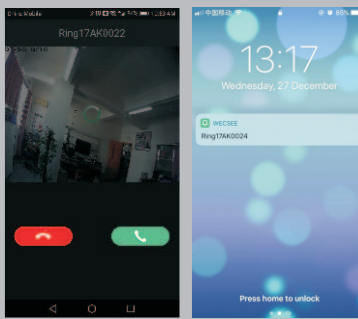


When the doorbell button is pressed, the app will send the following notifications, depending on the mode it's on.

STANDBY MODE

Android will receive a phone call.

iPhone will receive a push notification. Tap to continue.



APP INTERFACE FUNCTIONALITY

- TAP TO TAKE A SNAPSHOT
- TAP AND HOLD DOWN TO TALK
- TAP TO RECORD VIDEO

BATTERY LIFE
Runs up to 8 months after 1 full charge

PIR SETTINGS

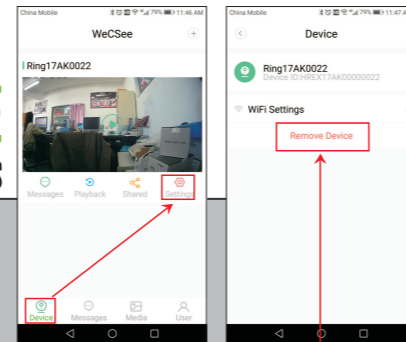
This function can only be enabled AFTER the app has been successfully added to your phone.

When pir alarm(PIR) are turned on, you'll be notified on your phone whenever motion is detected or when theft is attempted.



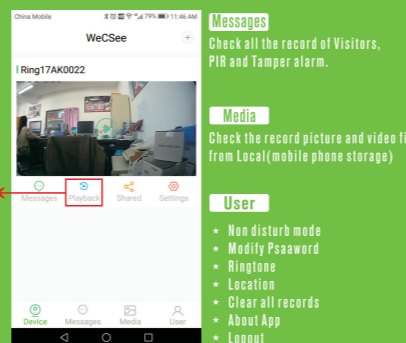
DEVICE APP FUNCTIONS

After installing the app, go into your device's information by tapping on the added device. Here you may review your pictures, videos, change your Wi-Fi settings, share the device or delete the device.



Note: If you wish to no longer use the device, please delete it from your phone using this option.

By tapping the Playback icon, you'll be able to access your SD-Card/cloud storage and review all your device's storage video records.



SHARING WITH OTHER PHONES

Shared users: Please download and install the app before proceeding.

This device can support 4 users. The shared users can add the device by scanning the shared QR Code provided by the Administrator(owner of device).

ADMINISTRATOR:
Setp 1: Choose the device you want to share.

Setp 2: Tap SCAN QR CODE SHARING. A QR Code will pop up.

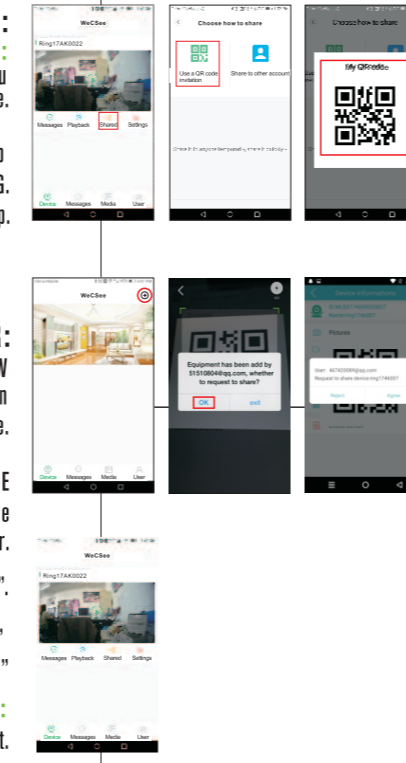
SHARED USER:
Setp 3: Tap on ADD NEW DEVICE and click on icon to scan the QR Code.

Setp 4: Scan the QR CODE that appears on the app of Administrator.

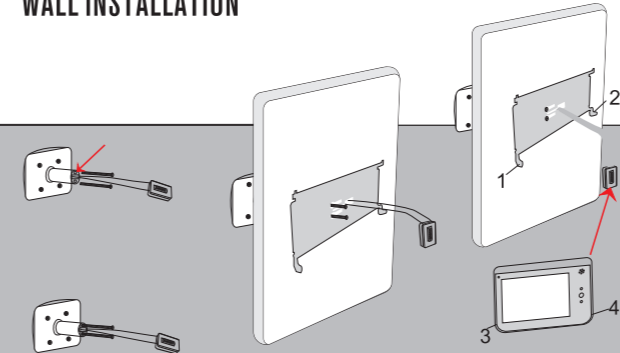
Setp 5: Tap "OK".

Setp 6: "Admin" Choose "AGREE."

Setp 7: Refresh Device List.



MOUNTING WALL INSTALLATION



Setp 1: Put the screws into the device hole

Setp 2: Take the cable through the door's hole and through the mounting plate, and then tighten the screws

Setp 3: Plug the cable and buckle into the correct location of LCD machine, and hang to the steel plate 1 and 2 position, then screw the position of 3 and 4 position

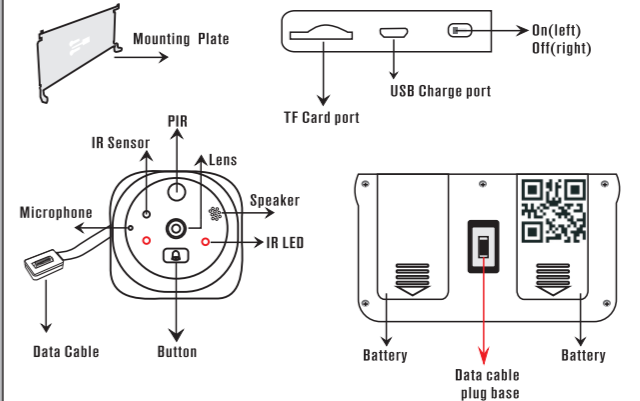
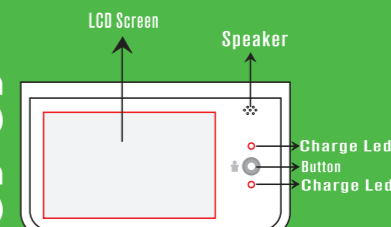
TROUBLE SHOOTING

WONT TURN ON: Please ensure that the device is properly charged.

DEVICE WONT TURN ON AFTER INITIAL USE: If you remove the device from the mounting plate while the Tamper Alarm function is turned on, you may disable the device. Simply put it back on the mounting plate and press the doorbell button. Go to the app settings to turn off the Tamper Alarm.

DEVICE WONT TURN ON AFTER INITIAL USE: If prompted with "The Connection Failed, Please Check The Wi-Fi Configuration is Correct" when ringing the doorbell after the device has been successfully configured, there may be too many barriers (typically walls) between your Wi-Fi router and the device which has weakened the signal.

PARTS & SPECS



SPECIFICATION:

- MATERIAL:** Aluminum Alloy
- LCD SIZE:** 4.3 Inch
- DISPLAY RESOLUTION:** 720P
- BY PHONE:** Android, iOS
- ANGLE OF VIEW:** 166°
- MOTION DETECTION:** Support PIR
- WI-FI MODE:** 802.11 b/g/n
- INPUT/OUTPUT:** Built-in microphone, two-way audio
- NIGHT VISIBILITY:** 2pc IR-LEDS, Night vision up to 3 meters
- STORAGE:** Cloud storage and TF Card(32GB Max.)
- BATTERY:** 3000mAh battery, charged by USB(5V, 1A)
- USER ACCOUNTS:** Total 4 Users(Admin user and shared user)
- CERTIFICATION:** CE, FCC, RoHS

PRECAUTIONS



Avoid Choking Hazard
Small Parts. Not for children under 3 years.



Due to the special nature of wireless products, please try to avoid or away from the following places when using:

- 1) large-scale mobile equipment base station, signal tower around;
- 2) Refrigerators, air conditioners, TVs and other high-power electrical appliances around;
- 3) Hospital large-scale ultrasound equipment;
- 4) Glass, steel and other high-density sealed building.
- 5) Defibrillators or other Implanted Medical Devices Persons with pacemakers, Implantable Cardioverter Defibrillators (ICDs) or other active implantable medical devices (AIMD) should:
 - ALWAYS keep the device more than 15 cm from their pacemaker when the device working.
 - Consult with their physicians regarding the potential risk of interference from radio frequency device, such as portable radios (poorly shielded medical devices may be more susceptible to interference).
- 6) Other Medical Devices;
- 7) If you use any other personal medical device, consult the manufacturer of your device to determine if it is adequately shielded from RF energy. Your physician may be able to assist you in obtaining this information;

- 8) Please pull out the antenna before using, so that the receiver can receive message more further;
- 9) After finish the settings, please power off the host and restart to make it effective;
- 10) Please use our original binding parts, especially the original binding battery and power adapter;

EU Importer :

Name : Germany Retevis Technology GmbH
Address : Uetzenacker 29,38176 wendeburg



Henan Eshow Electronic Commerce Co.,Ltd
Add:Room 722, Sanjiang Building, No.170 Nanyang Road, Huiji District, Zhengzhou, Henan, China
Facebook: facebook.com/TivdioRadio
E-mail: support@tivdio.com