

Retekess

OPERATION  
MANUAL

## HR11

FM/AM/SW(WB) Digital Radio/  
Bluetooth/MP3/Recorder



**Henan Eshow Electronic Commerce Co., Ltd**  
Room 722, Sanjiang Building, No.170 Nanyang Road,  
Huiji District, Zhengzhou, Henan, China  
Facebook: [facebook.com/TivdioRadio](https://www.facebook.com/TivdioRadio)  
E-mail: [support@tivdio.com](mailto:support@tivdio.com)



### Thank You

Thank you for purchasing the HR11 multi-band radio. Please read the manual thoroughly before operating and keep this book in a safe place for future reference.

#### Included Items:

- ✓ HR11 Radio\*1
- ✓ Lithium Battery\*1
- ✓ USB Cable\*1
- ✓ Operating Manual\*1
- ✓ Strap\*1

Our engineers devoted three years to research and development of this HR11 emergency outdoor radio. The world's first multi-band dial radio. it's perfect for outdoor use and sports activities, as well as indoor use during power outages or emergencies. The HR11 will quickly become an indispensable entertainment partner, and a help during emergencies .

EU Importer :

Name : Germany Retevis Technology GmbH  
Address : Uetzenacker 29,38176 wendeburg

## CONTENTS

---

CONTROL LOCATIONS .....	1
CONTROL LOCATIONS .....	2
CONTROL LOCATIONS .....	3
DEFINITION OF KEY OPERATIONS.....	4
LITHIUM BATTERY POWER SUPPLY.....	5
LITHIUM BATTERY POWER SUPPLY.....	6
BACKUP POWER SUPPLY.....	7
MAIN MENU.....	8
RADIO.....	9
FM STEREO/MONO SELECTION.....	10
VOLUME / MUTE.....	11
TUNING STATIONS.....	12
TUNING STATIONS.....	13
RADIO RECORDING.....	14
RADIO RECORDING.....	15

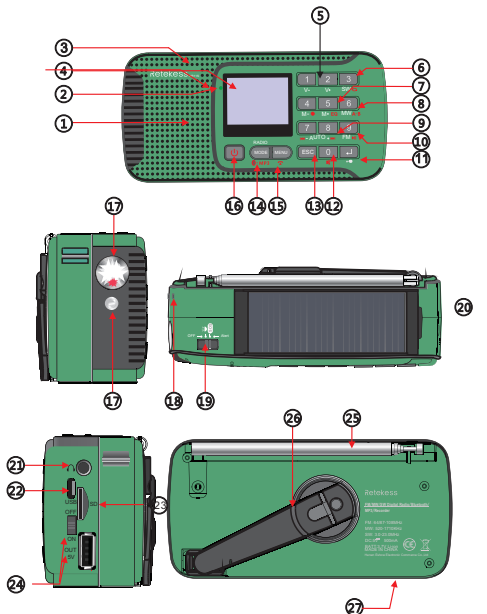
## CONTENTS

---

PLAYING MUSIC.....	16
PLAYING MUSIC.....	17
PLAYING MUSIC.....	18.
PLAYING MUSIC.....	19
SYSTEM SETTINGS.....	20
BACKLIGHT TIMER.....	21
ALARM SET.....	22
CONTRAST SET.....	23
FIRMWARE UPGRADE.....	24
FIRMWARE UPGRADE.....	25
CARE AND MAINTENANCE .....	26
BATTERY SAFETY INFORMATION.....	27
TROUBLESHOOTING .....	28
SPECIFICATIONS .....	29
CAUTION .....	30

# CONTROL LOCATIONS

## CONTROL LOCATIONS



- ① Speaker    ② Charge lamp    ③ Built-in MIC  
④ Display

# CONTROL LOCATIONS

- ⑤ Volume knob: Rotate to tune v+ /v-  
⑥ In radio mode: SW button or WB button  
In music mode: Choose play cycle mode  
In radio mode: M+  
In music mode: press to select and play EQ  
⑦ In radio mode: M-, long press to record radio  
In other mode: long press to enter MIC recording  
⑧ In radio mode: MW button  
In music mode: A-B repeat  
In radio mode: Frequency+  
In music mode: Next song/fast forward  
⑨ In radio mode: Frequency-  
In music mode: Preview song/fast backward  
In radio mode: FM button; Press to select FM stereo/mono  
⑩ In music mode: Play/Pause  
In recording mode: Pause/Continue  
⑪ In radio mode: Long press to lock/unlock keys  
In music mode: Long press to digital switch  
⑫ NO. Button: 0-9  
Escape button: Press to exit  
In Main menu: Press to display time  
⑬ In recording mode: Press to end recording and auto store the recorded file into the memory

## CONTROL LOCATIONS

---

### 14 Radio/Bluetooth/MP3 mode selection

In Bluetooth mode: link with mobile device,

### 15 short press can answer and hung up

Menu button: Press to enter menu/sub-menu or confirm

In time set mode: Press to move cursor

### 16 Power button 17 Flashlight/SOS light

### 18 Hand Strap

### 19 Alarm light / lighting / alarm sound switch

### 20 Solar panel 21 Stereo earphone jack

### 22 Micro USB port (link with computer/charge)

### 23 MICRO SD/TF card slot

### 24 External charging switch: Only external 5V charging in "ON", other status in "OFF"

### 25 Telescopic antenna 26 Crank power

### 27 Battery compartment

## DEFINITION OF KEY OPERATIONS

---

### DEFINITION OF KEY OPERATIONS

There are 3 operational ways of pressing the keys: short press, long press and hold on.

Unless expressly stated, all the operations are short press.



**Short press:** press the key once, and the function starts to work.

**Long press:** press and hold for more than 2 seconds and the function starts to work, and works only one time.

**Hold on:** press the key and hold on until stop, the function works several times in a certain frequency, such as fast forward/backward.

### LOCK/UNLOCK KEYS

HR11 is equipped with a key lock and unlock function, which you can manually turn on and off. When the radio is on, this will prevent you from accidentally pressing the buttons and changing the station

LOCK: Long press <  >, all the keys except this key will be locked with the "  " symbol shown on the display.

UNLOCK: After keys locked, long press <  > to unlock keys, and the "  " symbol disappears.

## LITHIUM BATTERY POWER SUPPLY

### LITHIUM BATTERY POWER SUPPLY

Please use the lithium battery approved by Rethesks to power this product. A lithium battery is attached with this product. Do not use of any un-qualified battery that may cause problems or pose a danger such as fire or explosion.

### INSTALLING THE BATTERY

1. Turn off the radio and open the battery cover.
2. Install the provided lithium battery according to the correct polarity.
3. Close the battery cover.

### BATTERY CONSUMPTION INDICATOR



1. Full



2. Medium



3. Low



4. Exhausted


### CHARGING THE LITHIUM BATTERY

#### External Adapter (not included)


Please use a proper adapter(5V DC/500mA, USB port) to charge the radio.

1. Install the lithium battery.


## LITHIUM BATTERY POWER SUPPLY


2. To charge the battery, connect the Micro-USB cable to the radio, the other end to a USB adapter.
3. While charging, the battery symbol shown on the display  moves from right to left, and stops when the battery is fully charged. Then disconnect the radio and the adapter.

### NOTE:

When charging, press <  > to turn on/off the radio. Alternating current can interfere with the radio signal, so it is not recommended to use the radio when charging. Do not use AC adapter or computer to power the radio to play music or listen to the radio when the battery is unloaded. Please remove the battery or fully charge it at least every 2 months if the radio is not used for a long time.

### Charging by PC

1. Connect the radio and the computer with the provided USB cable.
2. While charging, the battery symbol shown on the display  moves from right to left.
3. The battery symbol stops moving when the battery is full charged.

**NOTE:** When charging by PC, a USB symbol shown on the radio's display. When Micro SD/TF card or USB drive is inserted, press <  > twice and select Music Mode to play the music.

### CRANK POWER


When the battery is out of power. Crank the handle for 360 degrees and charge for the lithium battery.

**NOTE:** Set the power selector to OFF when crank charging the battery. This mode will charge the battery most efficiently.

### SOLAR POWER

Solar panel is designed to run the radio under sunlight; it can also charge the battery pack at a very slow rate. So theoretically, it will charge the battery, but it is better to crank the handle to charge the battery. Put the radio under strong sunlight, and set the power to OFF, and the sunlight will charge the battery. Indoor light may not charge or run the radio at all.

### POWER ON/OFF

Press the <  > button to turn the radio on/off.  
Auto turn off: The radio will turn off automatically in 3 minutes without any operation in Main Menu mode.

### MAIN MENU

In any mode, press <ESC> can go back to Main Menu.



Main Menu

In Main Menu, press <+ / >>>> or <- / <<<< to select either of the below functions and press <MENU> to enter.

**Radio:** FM/MW/SW(WB) Radio

**Music:** MP3 music play mode

**Text browser (Ebook):** Text reading mode

**System Settings**

**Calendar**

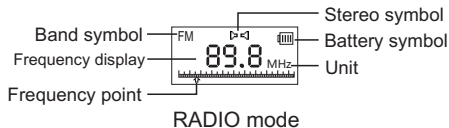
#### **NOTE:**

Press <ESC> in Main Menu to display the time. When the time is displayed, press <MENU> to go to Main Menu.

### HOW TO PLAY THE RADIO?

In Main Menu, select Radio and press <MENU> to listen to FM, the frequency shows on the display.

Repeatedly pressing <MODE/MP3> to enter either Radio or Music Mode.



## NOTE:

Due to electrical interference, it is not recommended that you use FM radio when the radio is connected to an external adapter or a computer.

## CHOOSING BANDS

In Radio Mode, press <FM/▶▶>, <MW/A=B>, <SW/☉> or <WB/☉> to select your desired band. The display will show the band symbol that you are listening to.

When listening to WB, press <WB/☉> to WB ALERT MODE, display ALERT.

## SELECTING FM FREQUENCY RANGE

When listening to FM, press <MENU> to enter the below sub-menu:

- **Save:** Store the station into memory manually
- **Delete:** Delete single memory
- **Delete all:** Delete all stored memories
- **Auto Search:** Auto tuning storage
- **Ordinary band:** 87-108MHz
- **Campus radio:** 64-108MHz
- **Japanese FM:** 76-90MHz
- **ESC**

## FM STEREO/MONO SELECTION

When listening to FM, press <FM/▶▶> to select stereo/mono listening. If [▶◀] shows in the display, stereo listening is selected, press <FM/▶▶> again to change to mono listening and the mono symbol [▶] will show. You cannot listen in stereo when the radio signal you are receiving is mono.

## Suggestions:

1. Stereo listening is for strong signal broadcasts and music programs.
2. For weak signal broadcasts or voice programs, please choose mono. (Because stereo decoding may be noisy.)

## 9k/10k AM TUNING STEPS

When listening to MW, press <MENU> to enter the below sub-menu:

- **Save:** Store the station into memory manually
- **Delete:** Delete single memory
- **Delete all:** Delete all stored memories
- **Auto Search:** Auto tuning storage
- **Stepping switch:** When "522" appears in the display, it indicates 9k steps are selected; When it shows "520", it indicates 10k steps are selected. Repeatedly pressing <MENU> to change between 9k and 10k
- **ESC**



### VOLUME / MUTE

To increase volume, press <VOL+>; To decrease volume, press <VOL->. The volume adjustment will be shown in the display.

Press <MUTE> to mute, press again to restore the sound.

### TUNING IN STATIONS

When attempting to tune in stations, stay away from electrical equipment and AC power sources. Optimal use of the antenna improves the signal reception.

#### Suggestions:

When tuning indoors, stay near the windows for better reception. AC current can interfere with radio reception; Please use the internal lithium battery to power the radio while tuning. It is not recommended to use the radio when charging the battery.

#### Using telescopic antenna:

This only works when listening to FM and SW(WB). When listening to FM or SW(WB), change the length of the telescopic antenna according to the signal intensity to get better reception.

#### Using built-in antenna:

The built-in internal ferrite rod antenna works for the MW band only. Rotate radio position to get the best reception. The radio location affects the MW reception, hence the proper direction of the radio can get you a much better reception on MW.

**Five tuning methods:** Manual tuning, Auto tuning, Direct frequency entry, Auto search (ATS) and memory recall.

#### Manual tuning:

1. Turn on the radio and select [Radio] in Main Menu.
2. Adjust the volume to an appropriate level and choose your desired band.
3. Press <+ / ►►►> or <- / ◀◀◀> to tune into a station, frequency will change a step with every press; stop pressing when you get the desired station.

#### Auto tuning:

1. Turn on the radio and select [Radio] in Main Menu.
2. Adjust the volume to an appropriate level and choose your desired band.
3. Press and hold < + / ►►► > or < - / ◀◀◀ > for about 2 seconds, then release to auto tune into the next available station. If the auto-tuned station frequency is inaccurate, please use manual tuning to find the accurate frequency point.

#### Auto search (ATS):

1. Turn on the radio and select [Radio] in Main Menu.
2. Adjust the volume to an appropriate level and choose your desired band.

3. Press <MENU> to open the sub-menu and select [Auto search], press <MENU> again to start auto tuning and store all the available stations into memory.

Memory location





**Memory Locations:**

**FM:** M001 - M440

**MW:** M001 - M132

**SW(WB):** M001 - M928

### Direct frequency entry

1. Turn on the radio and select [Radio] in Main Menu.
2. Adjust the volume to an appropriate level and choose your desired band.
3. Firstly press , and then input the frequency numbers that corresponds to a station's frequency by using the key board, and lastly press  to enter the station you need.

### Memory recall

1. Turn on the radio and select [Radio] in Main Menu.
2. Press <M+/EQ> or <M-/●> to select a station that stored within the memory.

### STORING STATIONS MANUALLY

Select your desired station, press <MENU> to open the sub-menu and select [Save], press <MENU> again to confirm. The stored station's memory location will be stored into the memory by the order of the frequency from low to high.

### NOTES:

After storing stations into memory, you can use Memory Recall to find the stored station quickly. All the stations that stored manually will be replaced when using Auto Search (ATS).

### DELETE SINGLE/ALL MEMORIES

Press <MENU> in radio mode, and select either <Delete> or <Delete all>, then press <MENU> again to delete single memory or all memories.

### RADIO RECORDING

While listening to radio broadcast, you can record the programs by the following steps:  
(TF card must be inserted correctly when using this function, the recorded file will be saved in the inserted TF card.)

1. Tune into the station that you want to record, long press <M-/●> to start recording, the file will be in .MP3 format.
2. Press < FM/▶| > to pause.
3. Press <ESC> to end recording, the file will be saved TF card automatically.

### NOTE:

1. While recording, some keys will be disabled.

## MIC RECORDING

In any mode except for radio mode, you can activate the MIC recording function by long pressing <M-/●>. While recording, keep the audio source close to the built-in MIC. Before recording, please make sure TF card is inserted correctly as the recorded file will be saved on the card as MP3 format. Do not pull out or insert TF card when the recording is in the progress to avoid damage.

## LISTENING TO RECORDED FILES

Select [Music] in Main Menu, all the recorded files can be found at the bottom of the list. You can also input the serial number of the particular file directly and press [MENU] to play it.

## MANAGE THE RECORDED FILES

In order to find out what you recorded, please follow the steps below to play it back. Go to MP3 mode, press <FM/▶▶> to pause the music, press <MENU> button, you will see 3 selections: Press < +/▶▶ > button, select [**Browse Files**] by turning the main knob, press <MENU> button to enter music list. Press < -/◀◀ > or < +/▶▶ > button, you will see [**JLREC**] folder name here, select [**JLREC**] and press <MENU> to enter recorded list. Press < -/◀◀ > or < +/▶▶ > button, select the one you recorded and play it by pressing <MENU> button.

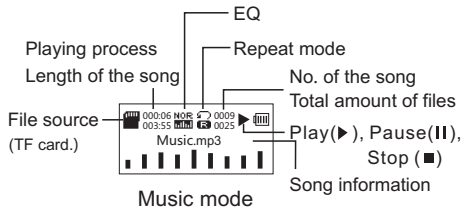
## CALENDAR

Select [Calendar] in Main Menu, press [MENU] to display the date, time and day of the week. You can use <Tuning knob> or < +/▶▶ >, < -/◀◀ > to adjust the year, month and day to see the corresponding day of the week. When adjusting the date, press <MENU> to move the cursor.

## PLAYING MUSIC

With the radio off, insert TF card with MP3/WMA/WAV format music files to the slot on the radio. Then turn on the radio and select [Music] in Main menu, the LCD shows the information of the song.

In Radio mode, press <Radio/MP3> to directly switch to Music mode.



**BLUETOOTH**

1. Press **<Bluetooth>** to enter the Bluetooth function. Open the mobile devices' Bluetooth to search radio Bluetooth **<HR11>** and click it to connect.
2. After the connection is successful, you can play the music from mobile devices. In addition when mobile devices are called, you can short press **< MENU / ☎ >** to answer or hang up. Finally, press **<ESC>** to exit this function.

**NOTES:**

Please insert or pull out the TF card when radio is off. Do not remove TFcard when the music is playing. If Music mode cannot be entered, please check if the card was inserted correctly.

**PLAY AND PAUSE**


When the music is playing, press **<FM/▶||>** to pause, the pause symbol "||" will show on the display. Press **<FM/▶||>** again to resume playing and the play symbol "▶" appears.

**SELECT MUSIC FILES**

1. Press **< +/▶▶ >** or **< -/◀◀ >** to select music files, press and hold them to fast rewind or fast forward.
2. When the music is playing, press **<MENU>** to open the sub-menu and select [File browser], press **<MENU>** to enter the folder and find the particular file

- by pressing **< +/▶▶ >** or **< -/◀◀ >**.
3. Directly input the number of the music file and press **<FM/▶||>** to confirm and the radio will play the selected file.

**A-B REPEAT**

When the music is playing, press **<MW/A⇒B>** once to set the start point A, [] shows on the display and "B" starts flashing. When the playing process reaches your desired location, press **<MW/A⇒B>** again to set the ending point B. Now the radio will repeat playing from A to B. While repeating, press **<MW/A⇒B>** to cancel the repeating and go on playing the file as normal.

**REPEAT MODE SELECTION**

When the music is playing, press **<SW/↻>** to select repeat mode from the below:

- |  |   |
|--|---|
|  - Repeat all |  - Repeat folder |
|  - Repeat one |  - Random        |

**EQUALIZER SELECTION**

When the music is playing, press **<M+/EQ>** to select equalizer from the below:

- |  |   |  |
|--|---|--|
|  - Normal |  - Pop     |  - Rock |
|  - Jazz   |  - Classic |  - Bass |

### LYRICS DISPLAY

Support both Chinese and English display.

The lyrics must be in .lrc format, use the same name as the song and location in the same folder.

Due to many Chinese versions on the market, you may have some characters that are unreadable.

### DELETE MUSIC FILES

When paused, press <MENU> to enter the following settings:

- File browser: Select music file
- Delete file: Delete a single music file
- Delete all: Delete all music files

To operate the above settings, press <MENU> to enter or confirm, press < +/▶▶ > or < -/◀◀ > for selection.

### TEXT BROWSER

Insert the TF card that with .txt format text file, then you can read the file with the radio.

Select [Text browser] in Main menu, press <MENU> to enter and select your desired file.

Then press <MENU> to start reading, press < +/▶▶ > or < -/◀◀ > to turn pages.

When reading, press <MENU> to enter below settings:

- File selection: select a particular file
- Play set: Manual or Auto play selection
- Playback speed

- Enter main: Enter Main menu
- ESC

### SYSTEM SETTINGS

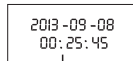
Select [System Settings] in Main menu, press <MENU> to enter below settings:

- System time
- Language
- Contrast
- Restore factory settings
- Backlight
- Tools
- Firmware version
- ESC

### DATE AND TIME SET

Select [System time] in System Settings, press <MENU> to enter date and time. Press <MENU> to move the cursor and press < +/▶▶ > or < -/◀◀ > to adjust. Press <ESC > to save and exit when setting finishes.

**NOTE:** Operating time for each step is about 5 seconds.



2013-09-08  
00:25:45

Year: Month: Date  
Hour: Minute: Second

Press <ESC > in Main menu can play the time on the display.

### BACKLIGHT TIMER

Select [Backlight] in System Settings, press <MENU> to enter. Press < +/▶▶ > or < -/◀◀ > to adjust the backlight timer from 3-240(seconds), press <MENU> to confirm and exit.

### LANGUAGE SELECTION

Select [Language] in System Settings, press <MENU> to enter language selection mode, press < +/▶▶ > or < -/◀◀ > to select your desired language.

### SLEEP TIMER

In System Settings, select [Tools] - [Sleep timer], press <MENU> to enter. Press < +/▶▶ > or < -/◀◀ > to adjust the auto turn off timer from 00 - 90, select 00 to turn off the sleep timer. Press <MENU> to confirm and exit.

The radio will turn off automatically when it reaches the preset time.

After setting the sleep timer, [🔔] will show on the display when the time is displayed.

### TURN ON/OFF KEY TONE

In System Settings, select [Tools] - [Touch-tune (off)]. Press <MENU> to turn on the key tone, and [Keypad tones (on)] shows on the display. While [Keypad tones (on)] displays, select it and press <MENU> to turn off the key tone.

### ALARM SET

In System Settings, select [Tools] - [Alarm]. Press <MENU> to enter the below settings:

#### - Alarm Off

Repeatedly pressing <MENU> to turn on or off the alarm. [Alarm Off] indicates the alarm is off, [Alarm ON] indicates the alarm is activated.

#### - Alarm Time

Press < +/▶▶ > or < -/◀◀ > to adjust the Hour and the Minute, press <MENU> to move the cursor, and press <ESC> to save and exit.

#### - Alarm Cycle

You can select from [Ring Once], [Ring Daily] or [Ring multi-day].

Ring Once: Press < +/▶▶ > or < -/◀◀ > to adjust the Year, Month and day, press <MENU> to move the cursor, and press <ESC> to save and exit.

Ring Daily: The alarm is effective every day.

Ring multi-day: Select from Monday to Sunday, press <MENU> to select and a tick will show. Press <ESC> to save and exit.

#### - Alarm Mode

Ring Embedded: Auto turn on the radio with a ringtone.

RADIO: Auto turn on the radio with the last radio station listened to.

Auto turn on the radio with the music file in the TF card that selected.  
Exit

## CONTRAST SET

### - ESC

When the alarm is activated, [🔔] appears on the display, the radio will sound the alarm with the selected mode when reaching the preset time. If the selected mode is [Ring Embedded], you can press any button to turn off the ringtone when the alarm goes off.

### CONTRAST SET

Select [Contrast] in System Settings, press <MENU> to enter. Press < +/▶▶ > or < -/◀◀ > to adjust from 00-16, press <MENU> to confirm and exit.

### FIRMWARE VERSION

Select [Firmware version] in System Settings, press <MENU> to display the firmware version information.

### RESET

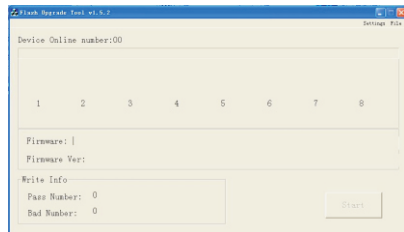
Select [Restore factory settings] in System Settings, press <MENU> and notice [Restore factory sett, NO] shows on the display. Press < +/▶▶ > or < -/◀◀ > to make [NO] or [YES] shows alternately. Select [YES] and press <MENU> to confirm reset.

## FIRMWARE UPGRADING

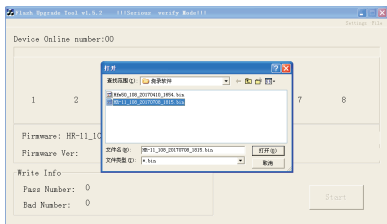
### FIRMWARE UPGRADE

The radio supports firmware upgrades, if there is updated firmware or the radio system breaks down, you can update the radio using the steps below: **(Remove the battery before updating)**

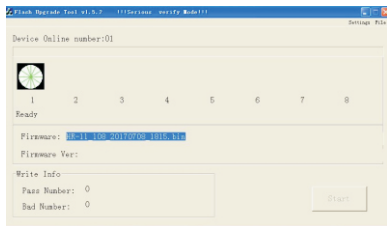
1. Download the upgraded firmware and update tool from our website to a computer.
2. Use the provided USB cable to connect the radio to the computer.
3. Open the downloaded update tool, the below program appears on the screen. (Picture 1-1)



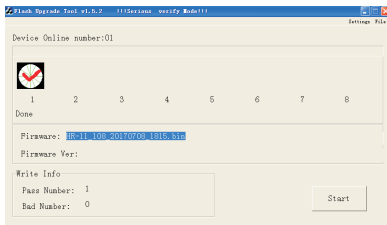
4. Click [Select file] (as the arrow pointed to) and find the downloaded upgrade firmware in your computer (Picture 1-2), then import the file to the tool. Click [Update file] to start updating. (See picture 1-3)
5. The process bar will turn from red to green once the update finishes. (Picture 1-4)



1-2



1-3



1-4

## CARE AND MAINTENANCE

1. Keep it dry. Rain, humidity and other types of liquids or moisture can contain minerals that may cause corrosion to components. If the radio does accidentally get wet, remove the battery and wait for the radio to dry completely before re-installing.
2. Do not use or store in dusty or dirty areas. This may damage the moving parts and electronic components.
3. Do not store the radio in overly hot areas. High temperatures can shorten the life span of certain components.
4. Do not place the radio in cold environment. Otherwise, when the surrounding temperature rises to room temperature, internal moisture may develop and damage the circuit board.
5. Do not drop, hit or smash the radio.
6. Do not use harsh chemicals, cleaning solvents, or strong detergent to wash the radio. Use a clean and dry soft cloth to clean the screen.



### BATTERY SAFETY INFORMATION

1. Use the battery under normal conditions, temperature:  $(20\pm 5)^{\circ}\text{C}$ , relative humidity:  $65 \pm 20\%$ . Under normal circumstances, the battery can be charged and discharged about 300 times.
2. Do not expose the battery to heat or high pressure. Do not drop the battery. Keep children from playing with the battery.
3. Do not short-circuit the battery or open it. Do not expose to damp environments.
4. If not using the radio for an extended period of time, remove the battery and store in a safe manner. Please use a nonconductive material to wrap the battery in order to avoid direct contact with metal. You can avoid damage by keeping the battery in a cool dry place.
5. Dispose of the battery properly, do not put into fire or water.
6. Do not use the battery under strong sunlight to avoid overheating, deformation or smoldering, which will reduce the performance and life span of the battery, and may cause a fire.

### TROUBLESHOOTING

1. **Cannot turn on the radio.**
  - The battery may be drained. Please charge the battery.
2. **Cannot be connected to a computer.**
  - Please reconnect in radio off mode.
  - The USB cable may be damaged, please try another one.
3. **Speaker does not produce sound.**
  - Check the volume level; if too low, turn it up.
4. **Cannot play audio from the TF card**
  - Check if the card or the USB drive has poor compatibility by trying another card or USB drive.
  - The file is damaged or has an incorrect format, Delete the file and try again.
5. **Cannot charge the radio.**
  - Check if the external adapter or the USB cable is connected correctly.
  - Check if the adapter or USB cable is damaged.
6. **How to reset the radio?**
  - Misuse may lead to errors in the firmware.
  - Remove the battery for a few minutes and re-install.

## SPECIFICATIONS

<b>Memory</b>	Supports micro-SD card 64M-32G
<b>Music format</b>	MP3 WMA WAV
<b>Access rate</b>	MP3: 16-320Kbps WMA: 8-384Kbps
<b>Frequency range</b>	FM 87.0-108MHz 64.0-108MHz MW 522-1710KHz SW 3.0-23.0MHz or WB 1-7Channel
<b>Earphone output</b>	≤10mW*2
<b>Communication standard</b>	USB2.0(high speed)
<b>Max. output (Speaker)</b>	About 600mW
<b>Max. current consumption</b>	About 300mA
<b>Power source</b>	
Lithium battery	3.7V
External adapter	5V --- 500mA
<b>Lithium battery consumption (Volume is 22 level)</b>	Mp3: About 5H Radio: About 5H
<b>Charging time</b>	4-6 hours
<b>Speaker</b>	D40mm
<b>Earphone</b>	D3.5mm
<b>Unit size</b>	Approx.126 x 43 x 62mm

## Avoid Choking Hazard



Small Parts. Not for children under 3 years.

## Protect your hearing



- Use the lowest volume necessary to do your job.
- Turn up the volume only if you are in noisy surroundings.
- Turn down the volume before adding headset or earpiece.
- Limit the amount of time you use headsets or earpieces at high volume.
- When using the radio without a headset or earpiece, do not place the radio's speaker directly against your ear

Note: Exposure to loud noises from any source for extended periods of time may temporarily or permanently affect your hearing. The louder the radio's volume, the less time is required before your hearing could be affected. Hearing damage from loud noise is sometimes undetectable at first and can have a cumulative effect.