

RETEKES

Enjoy digital wireless life



2.4G digital wireless tour guide system

Instructions

Model: T129

- The second generation wireless tour guide transmitter.....1PC
- The second generation wireless tour guide receiver.....NPC
- 3.5 headset or col lar microphone.....1PC
- 3.5 earphone headset or headset.....NPC
- SMA antennas.....NPC

Products

To users

Thank you for choosing T129 high-fidelity digital wireless products that produced. T129 is an anti-interference digital wireless mini-tour guide system produced by using T129 which is digital wireless audio transceiver modules. The core module uses our high-quality 2.4GHz audio transmit module which already owns the property right, using the best sample rate in industry, good sound effect, strong anti-interference capability. The module's work frequency is 2.4G ISM international free band, which serves the global market.

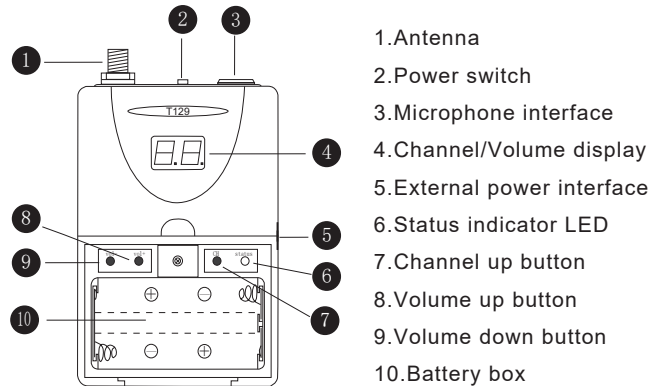
Before using, please check the attachment whether it is complete according to the instructions on page of packing list first, to avoid unnecessary trouble. For best performance, and give full play to all the features of this unit, please read these instructions carefully and correctly set. Please save this for future shows that at any time.

Special Declaration

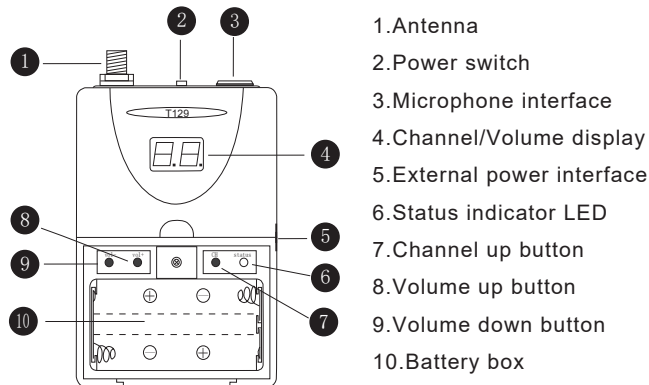
1. Intellectual property rights statement: The hardware and software of the product is protected by copyright law and the International Convention. Without any written authorization of our company, any copy of the product and of the specifications, part or all, will bear the corresponding legal responsibility. The brochures are copyright based on our company, without the consent of our Company, not a part or all of the Manual may be externally released.

2. The manual is only for reference and ultimate practical features are depending on whichever is actually ordered and whatever features are actually received and realized.

Part name

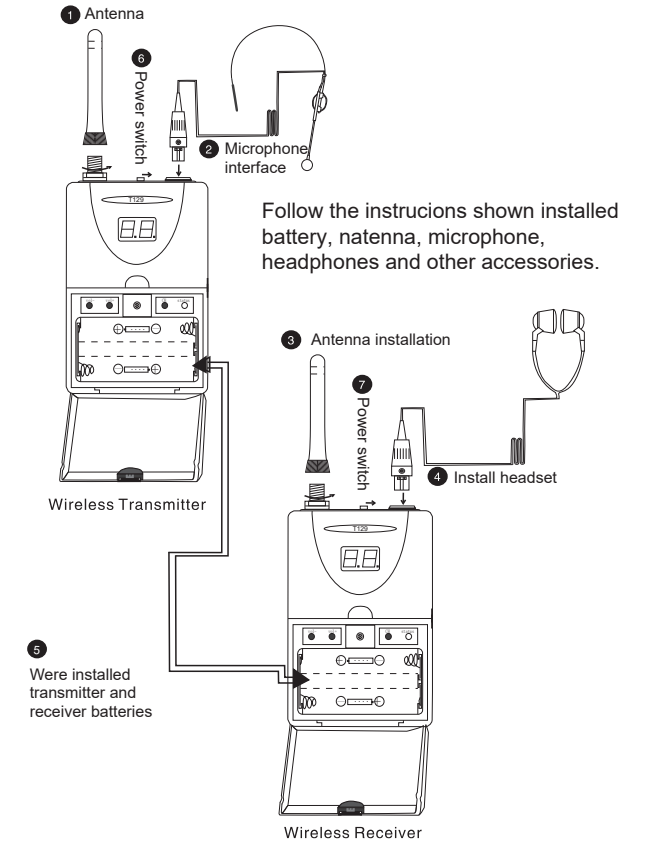


Wireless tour guide transmitter



Wireless tour guide receiver

Using preparation



Operation Guide

1. Pairing way of frequency: Press the channel button, to adjust the same channel of transmitter and the receiver (If the mode is auto pairing, need not this operation), when the transmitter and receiver been adjust same channel, LED off on receiver. After pairing finish, the system enter into normal situation.

Notice: Press Channel button and loose (In three seconds) then channel change once, Totally can change 20 channel; after the channel of transmitter that been adjust, if the mode of receiver that is manual pair then need adjust simultaneous, If pairing is Auto mode that receiver needn't any operation, pairing can finish automatically.

2. Channel adjustment: When you meet interference, you should change channel on adjust channel.

3. Adjusting default setting: Press the channel button (CH+) of transmitter continuously for about 20 seconds, Until Status indicate LED flickers faster, Loose the channel button (CH+), restart machine that Recovery default setting finish.

4. Pairing way of code: Press the channel keys of both the transmitter and the receiver simultaneously for more than 3s (Mean while LED remains off for 3s), till LED is on. Stop pressing, and it gets into the state of 5s peer to peer pairing (Mean while LED flickers). After receiver receiving ID paired signals, the LED flickers 3 times, indicating that it gets into the state of receiving, waiting for the signals from the transmitter. Normally, led goes out when pairing work is successfully done. If the key shouldn't be released during led blinking, which indicates that the transmitter has got into the mode of point to mass pairing, and point to mass pairing work of one transmitter to multi receiver that is over. (Note: This feature is used with caution)

5. Special Note: Please check the transmitter's double-digit display LED which locate belong bottom right corner of display window when using the microphone, that should show a small dot (Microphone switch), if it does not display a small dot, it should be the audio switch, which can press the volume keys of plus or minus to convert it.

Electrical Specification

Frequency Response.....	20Hz-20KHz
Frequency Range.....	2400MHz-2483MHz
THD.....	0.3%@1kHz
S/N Ratio.....	95dB
Latency.....	< 0.5ms
Operation Temperature.....	-25 °C -85 °C
Work Voltage.....	DC 3.6-6V
TX Power.....	0-18dBm Select (decided when ordering)

Discharge Fault

No sound troubleshooting

1. Check the power LED whether light. Is not light, indicating a power problem, check the power cable or replace the battery.
2. Check the audio cable is connected correctly. With the manual installation of the audio cable connection.
3. Check speakers / headphones are working properly. Please replace speakers or headphones.
4. Check audio input. If the microphone input, check the microphone is working properly; if other audio input, make sure that the device is working correctly.
5. Check that the antenna is properly installed. Installed correctly, and tighten.
6. Check whether the audio and volume control device is in the smallest state. If so, please adjust the volume to a moderate position.
7. Inspect equipment whether it has RF switch, if yes, please put the RF switch on.
8. Check the status lights to see in what state. Long light shows the receiver did not receive the signal. This case, please adjust the receiver's channel, so that the receiver and transmitter used in the same channel. when the two channels are same, the lights go out, work properly. If the channel is the same, but the receiver is not receiving the transmitter signal, hold down the control key of channel that for 20 seconds, the device settings to their original settings, and then re-pairing frequency.

The reasons of not charge or charge not fully and solution

1. Battery upside down. Align the battery contacts to the host cell and installation.
2. Charging power cable loose. make sure the power cable is good.
3. Not equipped with the device adapter and cable for charging. please use the charging device.
4. Battery aging, replace the battery.

The reasons of sound Distorted and solution

1. Audio cable errors or loose. Connected with the manual and tighten.
2. The source input sound excessive. Please adjust the input audio volume.
3. Antenna not installed or bad. Install and tighten.
4. Battery not enough. Please recharge or replace batteries.
5. MIC switch and audio switch conversion errors, which can press the plus or minus key to change it.

RF ENERGY EXPOSURE AND PRODUCT SAFETY GUIDE



Before using this radio, read this guide which contains important operating instructions for safe usage and RF energy awareness and control for compliance with applicable standards and regulations.

This radio uses electromagnetic energy in the radio frequency (RF) spectrum to provide communications between two or more users over a distance. RF energy, which when used improperly, can cause biological damage.

All Reteless radios are designed, manufactured, and tested to ensure they meet government-established RF exposure levels. In addition, manufacturers also recommend specific operating instructions to users of the radios. These instructions are important because they inform users about RF energy exposure and provide simple procedures on how to control it.

Please refer to the following websites for more information on what RF energy exposure is and how to control your exposure to assure compliance with established RF exposure limits: <http://www.who.int/en/>

Local Government Regulations

When radios are used as a consequence of employment, the Local Government Regulations requires users to be fully aware of and able to control their exposure to meet occupational requirements. Exposure awareness can be facilitated by the use of a product label directing users to specific user awareness information. Your Reteless radio has a RF Exposure Product Label. Also, your Reteless user manual, or separate safety booklet includes information and operating instructions required to control your RF exposure and to satisfy compliance requirements

Radio License (if appropriate)

Governments keep the radios in classification, business radios operate on radio frequencies that are regulated by the local radio management departments (FCC, ISED, OFCOM, ANFR, BFTK, Bundesnetzagentur...). To transmit on these frequencies, you are required to have a license issued by them. The detailed classification and the use of your radios, please contact the local government radio management departments.

Use of this radio outside the country where it was intended to be distributed is subject to government regulations and may be prohibited.

Unauthorized modification and adjustment

Changes or modifications not expressly approved by the party responsible for compliance may void the user's authority granted by the local government radio management departments to operate this radio and should not be made. To comply with the corresponding requirements, transmitter adjustments should be made only by or under the supervision of a person certified as technically qualified to perform transmitter maintenance and repairs in the private land mobile and fixed services as certified by an organization representative of the user of those services. Replacement of any transmitter component (crystal, semiconductor, etc.) not authorized by the local government radio management departments equipment authorization for this radio could violate the rules

FCC Requirements:

- This device complies with part 15 of the FCC Rules. Operation is subject to the following two conditions:
 - (1) This device may not cause harmful interference, and
 - (2) This device must accept any interference received, including interference that may cause undesired operation.
- This equipment has been tested and found to comply with the limits for a Class B digital device, pursuant to Part 15 of the FCC Rules. These limits are designed to provide reasonable protection against harmful interference in a residential installation. This equipment generates uses and can radiate radio frequency energy and, if not installed and used in accordance with the instructions, may cause harmful interference to radio communications. However, there is no guarantee that interference will not occur in a particular installation. If this equipment does cause harmful interference to radio or television reception, which can be determined by turning the equipment off and on, the user is encouraged to try to correct the interference by one or more of the following measures:
 - Reorient or relocate the receiving antenna.
 - Increase the separation between the equipment and receiver.
 - Connect the equipment into an outlet on a circuit different from that to which the receiver is connected.
 - Consult the dealer or an experienced radio/TV technician for help.

CE Requirements:

- (Simple EU declaration of conformity) Henan Eshow Electronic Commerce Co., Ltd declares that the radio equipment type is in compliance with the essential requirements and other relevant provisions of RED Directive 2014/53/EU and the ROHS Directive 2011/65/EU and the WEEE Directive 2012/19/EU; the full text of the EU declaration of conformity is available at the following internet address: www.retekess.com.
 - Disposal
- The crossed-out wheeled-bin symbol on your product, literature, or packaging reminds you that in the European Union, all electrical and electronic products, batteries, and accumulators (rechargeable batteries) must be taken to designated collection locations at the end of their working life. Do not dispose of these products as unsorted municipal waste. Dispose of them according to the laws in your area.



IC Requirements:

- Licence-exempt radio apparatus
- This device contains licence-exempt transmitter(s)/receiver(s) that comply with Innovation, Science and Economic Development Canada's licence-exempt RSS(s). Operation is subject to the following two conditions:
- (1) This device may not cause interference.
 - (2) This device must accept any interference, including interference that may cause undesired operation of the device.
- Le présent appareil est conforme aux CNR d'Industrie Canada applicables aux appareils radio exempts de licence. L'exploitation est autorisée aux deux conditions suivantes :
- (1) l'appareil ne doit pas produire de brouillage;
 - (2) l'utilisateur de l'appareil doit accepter tout brouillage radioélectrique subi, même si le brouillage est susceptible d'en compromettre le fonctionnement

RF Exposure Information

- DO NOT operate the radio without a proper antenna attached, as this may damage the radio and may also cause you to exceed RF exposure limits. A proper antenna is the antenna supplied with this radio by the manufacturer or an antenna specifically authorized by the manufacturer for use with this radio, and the antenna gain shall not exceed the specified gain by the manufacturer declared.
- DO NOT transmit for more than 50% of total radio use time, more than 50% of the time can cause RF exposure compliance requirements to be exceeded.
- During transmissions, your radio generates RF energy that can possibly cause interference with other devices or systems. To avoid such interference, turn off the radio in areas where signs are posted to do so.
- The device complies with RF specifications when the device used at 5mm from your body. Third-party belt-clips, holsters, and similar accessories used by this device should not contain any metallic components. Body-worn accessories that do not meet these requirements may not comply with RF exposure requirements and should be avoided.
- DO NOT operate the transmitter in areas that are sensitive to electromagnetic radiation such as hospitals, aircraft, and blasting sites.

Avoid Choking Hazard



Small Parts. Not for children under 3 years.

Protect your hearing:



WARNING

- Use the lowest volume necessary to do your job.
- Turn up the volume only if you are in noisy surroundings.
- Turn down the volume before adding headset or earpiece.
- Limit the amount of time you use headsets or earpieces at high volume.
- When using the radio without a headset or earpiece, do not place the radio's speaker directly against your ear
- Use careful with the earphone maybe possible excessive sound pressure from earphones and headphones can cause hearing loss

Note: Exposure to loud noises from any source for extended periods of time may temporarily or permanently affect your hearing. The louder the radio's volume, the less time is required before your hearing could be affected. Hearing damage from loud noise is sometimes undetectable at first and can have a cumulative effect.



Avoid Burns



WARNING

- **Antennas**
- When not use any portable radio that has a damaged antenna. If a damaged antenna comes into contact with the skin when the radio is in use, a minor burn can result.
- **Batteries (if appropriate)**
- When the conductive material such as jewelry, keys or chains touch exposed terminals of the batteries, may complete an electrical circuit (short circuit the battery) and become hot to cause bodily injury such as burns. Exercise care in handling any battery, particularly when placing it inside a pocket, purse or other container with metal objects
- **Long transmission**
- When the transceiver is used for long transmissions, the radiator and chassis will become hot.

Safety Operation



WARNING

- **Forbid**
- Do not use charger outdoors or in moist environments, use only in dry locations/ conditions.
- Do not disassemble the charger, that may result in risk of electrical shock or fire.
- Do not operate the charger if it has been broken or damaged in any way.
- Do not place a portable radio in the area over an air bag or in the air bag deployment area. The radio may be propelled with great force and cause serious injury to occupants of the vehicle when the air bag inflates.
- To reduce risk
 - Pull by the plug rather than the cord when disconnecting the charger.
 - Unplug the charger from the AC outlet before attempting any maintenance or cleaning.
- Contact Reteless for assistance regarding repairs and service.
- The adapter shall be installed near the equipment and shall be easily accessible
- Risk of explosion if battery is replaced by an incorrect type. Dispose of used batteries according to the instructions.
- Adapter shall be installed near the equipment and shall be easily accessible.
- The plug considered as disconnect device of adapter.
- The operating temperature of the EUT can't exceed the specified range.

Approved Accessories



WARNING

- This radio meets the RF exposure guidelines when used with the Reteless accessories supplied or designated for the product. Use of other accessories may not ensure compliance with the RF exposure guidelines and may violate regulations.
- For a list of Reteless-approved accessories for your radio model, visit the following website: <http://www.Retekess.com>

EU Importer:

Name: Germany Retevis Technology GmbH

Address: Uetzenacker 29, 38176 Wendeburg