

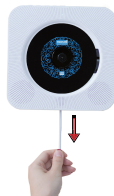
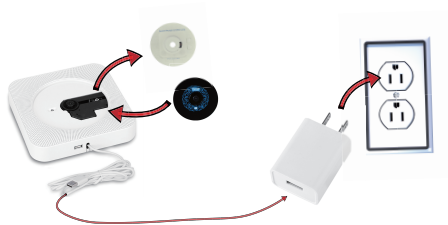
RETEKESS

Model: TR609



Wall Mounted CD Player User Manual

4-Steps Quick Instruction



1. Remove the paper CD and put a correct CD discs.
2. Insert the USB power cable into the 5V2A adaptor and plug into power outlet AC 110-240V
3. **Pull** the pulling cable will read CD automatically.
4. Remove the insulating film on the battery drawer before remote it.

Warning / Reminder:

1. The power supply input adaptor to CD player must be 5V 1.5-2.0A.
2. Put a CD to avoid dust in condition of long time non-use.
3. Do not use cracked or damaged CD.
4. Do not touch the laser by hand.
5. The CD player can not be powered-on by the remote. You have to pull the pulling-cord-switch before using remote.

Content

Quick Usage Instruction	2
Contents	3
Packing Details	4
Structure and Buttons	5
Remote	6
CD Mode Operation	7
BT Mode Operation	8
FM Radio Operation	9
AUX Mode Operation	10
USB/SD Flash Disk & A-B Repeat & Audio Output	11
LED display & LED light	12
Sleep timer operation	13
Troubleshooting & Specifications	14
Wall Mounting Instruction	15

Packing List



CD player & Paper Disc Cover



Remote



Desk Stand



5V2A USB adaptor



Wall Mount Plate



3.5mm male-to-male Cable

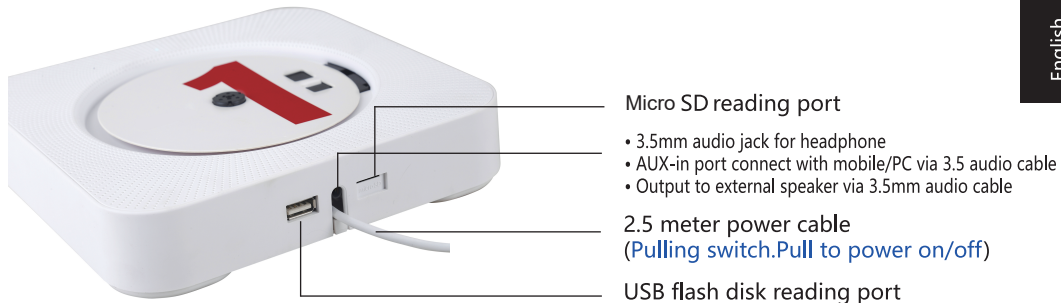


Wall Mount Kit



Manual

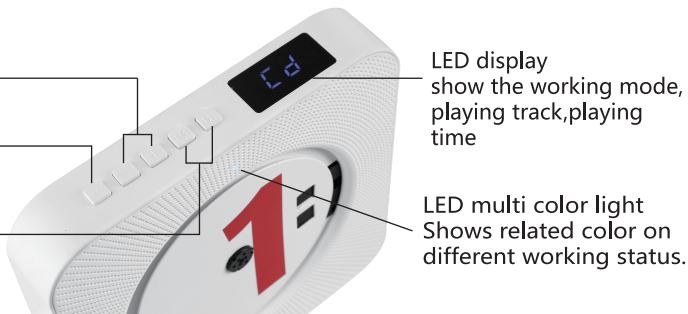
Structure and buttons



Volume + / -

MODE button,short press to
shift CD-USB-SD-BT-FM-AUX

Short press for NEXT / PREV
Long press for forward / backward



Remote

Infrared transmitter
(not a light)

Standby

NOT a power key to power on/off

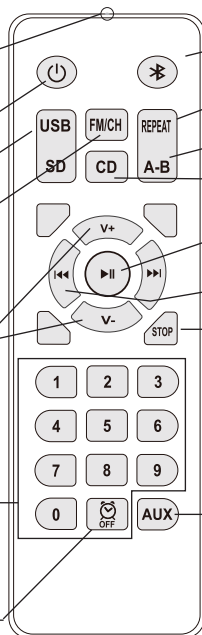
USB Mode

FM Mode / Search

Volume +/-

Number keys

Sleep timer



BT

Loop select key :
Repeat one/All/Random/Off

A-B repeat

CD Mode

Play / Pause

Short press for NEXT / PREV
Long press for forward / backward

Stop

AUX

CD Mode

Two ways to shift into CD mode :

① Press MODE until it shifts to CD mode

② Press CD key on remote to shift into CD mode



- Put a correct CD and pull the power switch, it will read and play CD automatically after power on.
- CD player will shift into FM radio mode automatically after power on if the CD is not readable
- It supports forward/ backward & A-B repeat .You can select tracks by the digital buttons on remote
- When CD player is power on ,it plays the same track which was playing when last time power off

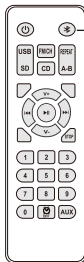


BT Mode

Two methods to shift into BT Mode :

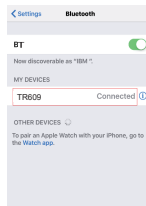
① Press MODE to shift to BT mode

② Press the BT key on remote



Search the BT and pair with TR609

- BT list name " TR609 "
- When the CD player pairs with any BT enabled devices. It works the same theory as other BT speakers. It receives BT from other devices but not transmit BT to any other BT earphone / speaker
- The remote is able to control volume and NEXT/ PREV in BT working status



FM Radio

Two methods to shift into FM mode :

① Press the MODE button to shift from CD to FM mode

② Press the FM key on remote

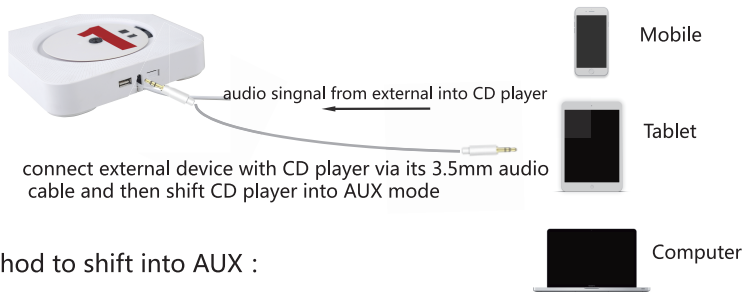


Full auto search / semi-auto search

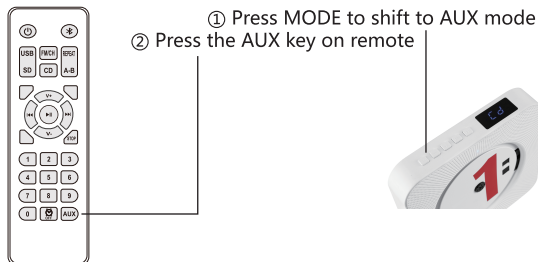
- Full auto search : Under FM working mode, short press the FM key to start full-auto search , wait for a short time to complete the auto search and the searched channels will be saved into the number buttons. then you can press number keys on remote to play the related channels.
- Semi-auto search: Under FM working mode , Long press NEXT/PREV key and release finger until the player become mute and it will automatically shift into the next/prev FM channel. Each time it searches only one channel and you can save this current track onto any number by long pressing the related number. key. on remote



AUX Mode



Two method to shift into AUX :



- Under the AUX mode, the CD player works as a wired speaker
- It can be used as a PC speaker in this mode.



USB/SD Mode、A-B repeat

First insert an USB drive into USB port



- Insert USB drive while power-on, CD player shifts into USB reading automatically
- Under USB mode, you can operate by remote control.
- Under USB mode. you can operate A-B repeat

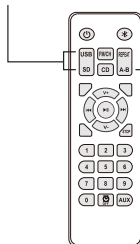
Audio Output



audio signal from CD player to external

Two methods to shift into USB mode :

① Insert a USB drive in power-on condition and it will shift into USB reading automatically .



② Press USB/SD key on the remote to shift into USB mode

A-B repeat :

In CD/USB/SD mode, press the A-B key twice to repeat the content between two presses and it will play this content all the time until press A-B key again to stop

- Under CD/USB/SD mode, its built-in speakers stop working automatically when you insert a 3.5mm audio cable. its audio signal output from CD player to external



LED display & LED light



LED screen
Shows playing mode
and playing time



Multi color LED light
Shows a related color in
different working modes.

CD Mode



USB Mode



SD Mode



BT Mode



FM Radio

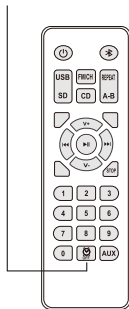


AUX



Sleep timer operation

Use the clock key on the remote to set the sleep timer.



A clock icon comes out on the display while the sleep timer is activated

Setting:

- time set range: 30 - 180 minutes.
- the sleep timer is activated by pressing the clock key once and it sets starting with 30 mins
- it adds 30 mins by each press which shows on the display when you are setting, the sleep timer can be set maximum 360 mins. then press one more time to turn off the sleep timer.
- set a time and the player starts to count down until it become standby automatically in the end

Specifications & Troubleshooting

Specifications:

1. CD format support: CD,CD-R,CD-RW,MP3,WMA
2. FM Radio Range: 87.5KHz-108.0MHz
3. BT version 4.2
4. Speaker: 45mm X 2
5. Rated impedance: 4Ω
6. Speaker output: 3W x 2
7. Power supply: AC110-240V, 50KHz/60Hz
8. Power/Switch cable length: 2.5m
9. Dimension of main unit/package: 189mm*189mm*37mm
10. Net weight/Gross weight: 540g/900g

Trouble shooting:

- Remote control does not work

Make sure you' ve already removed the battery insulating sheet on the remote control battery drawer.

Make sure the remote control aim at the suitable place : close to the pull switch area on the player

Make sure the distance between remote control and the CD palyer is within 6 meters.

Check if the batteries inside the remote control is dead.

ATTENTION:Remote is not able to power the player on/off instead of pulling the power switch.

- The CD player does not work

a. Check the power supply is connected successfully. If you are not using its attached USB adaptor please make sure the power is standard 5V/1.5-2.0A.

b. If the player works under a situation with large temperature difference, the laser head may covered with mist and cause trouble. Please put aside the CD player for 1 hour until it become dry, then turn on the power and try to play CD again

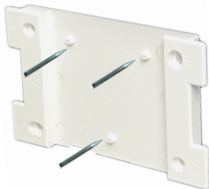
- CD function does not work

Check if the format of your disc is the suitable one or check if your disc is old or broken. And make sure the disc is placed correctly.

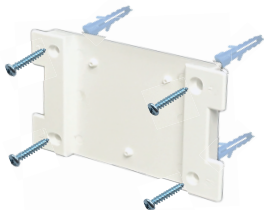
Wall Mount

TWO steps to mount on the wall

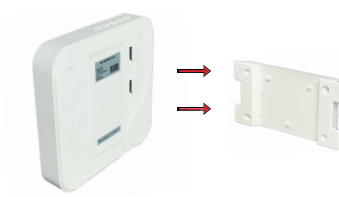
①-1 use three nail to fix the plate on the wall



①-2 use four screws to fix it **if** the first method is not firm enough.



② fix the CD player onto the plate



One step to mount it on the desk



RF ENERGY EXPOSURE AND PRODUCT SAFETY GUIDE



Before using this radio, read this guide which contains important operating instructions for safe usage and rf energy awareness and control for compliance with applicable standards and regulations.

Local Government Regulations

When radios are used as a consequence of employment, the Local Government Regulations requires users to be fully aware of and able to control their exposure to meet occupational requirements. Exposure awareness can be facilitated by the use of a product label directing users to specific user awareness information. Your Reteless radio has a RF Exposure Product Label. Also, your Reteless user manual, or separate safety booklet includes information and operating instructions required to control your RF exposure and to satisfy compliance requirements.

Unauthorized modification and adjustment

Changes or modifications not expressly approved by the party responsible for compliance may void the user's authority granted by the local government radio management departments to operate this radio and should not be made. To comply with the corresponding requirements, transmitter adjustments should be made only by or under the supervision of a person certified as technically qualified to perform transmitter maintenance and repairs in the private land mobile and fixed services as certified by an organization representative of the user of those services.

Replacement of any transmitter component (crystal, semiconductor, etc.) not authorized by the local government radio management departments equipment authorization for this radio could violate the rules.

FCC Requirements:

- This device complies with part 15 of the FCC Rules. Operation is subject to the following two conditions:
 - (1) This device may not cause harmful interference, and
 - (2) this device must accept any interference received, including interference that may cause undesired operation.
- This equipment has been tested and found to comply with the limits for a Class B digital device, pursuant to Part 15 of the FCC Rules. These limits are designed to provide reasonable protection against harmful interference in a residential installation.
- This equipment generates uses and can radiate radio frequency energy and, if not installed and used in accordance with the instructions, may cause harmful interference to radio communications. However, there is no guarantee that interference will not occur in a particular installation. If this equipment does cause harmful interference to radio or television reception, which can be determined by turning the equipment off and on, the user is encouraged to try to correct the interference by one or more of the following measures:

- Reorient or relocate the receiving antenna.
- Increase the separation between the equipment and receiver.
- Connect the equipment into an outlet on a circuit different from that to which the receiver is connected.
- Consult the dealer or an experienced radio/TV technician for help.

CE Requirements:

•(Simple EU declaration of conformity) Henan Eshow Electronic Commerce Co.,Ltd declares that the radio equipment type is in compliance with the essential requirements and other relevant provisions of RED Directive 2014/53/EU and the ROHS Directive 2011/65/EU and the WEEE Directive 2012/19/EU; the full text of the EU declaration of conformity is available at the following internet address: www.retekess.com.

•Disposal

The crossed-out wheeled-bin symbol on your product, literature, or packaging reminds you that in the European Union, all electrical and electronic products, batteries, and accumulators (rechargeable batteries) must be taken to designated collection locations at the end of their working life. Do not dispose of these products as unsorted municipal waste. Dispose of them according to the laws in your area.



IC Requirements:

Licence-exempt radio apparatus

This device contains licence-exempt transmitter(s)/receiver(s) that comply with Innovation, Science and Economic Development Canada's licence-exempt RSS(s). Operation is subject to the following two conditions:

- (1) This device may not cause interference.
- (2) This device must accept any interference, including interference that may cause undesired operation of the device.

Le présent appareil est conforme aux CNR d'Industrie Canada applicables aux appareils radio exempts de licence.

L'exploitation est autorisée aux deux conditions suivantes :

- (1) l'appareil ne doit pas produire de brouillage;
- (2) l'utilisateur de l'appareil doit accepter tout brouillage radioélectrique subi, même si le brouillage est susceptible d'en compromettre le fonctionnement.

RF Warning Statements

The device has been evaluated to meet general RF exposure requirement. The device can be used in portable exposure condition without restriction.

RF Exposure Information

- DO NOT operate the radio without a proper antenna attached, as this may damage the radio and may also cause you to exceed RF exposure limits. A proper antenna is the antenna supplied with this radio by the manufacturer or an antenna specifically authorized by the manufacturer for use with this radio, and the antenna gain shall not exceed the specified gain by the manufacturer declared.
- To avoid interference, turn off the radio in areas where signs are posted to do so.

•DO NOT operate the transmitter in areas that are sensitive to electromagnetic radiation such as hospitals, aircraft, and blasting sites.

Avoid Choking Hazard



Small Parts. Not for children under 3 years.

Protect your hearing:



- Use the lowest volume necessary to do your job.
- Turn up the volume only if you are in noisy surroundings.
- Turn down the volume before adding headset or earpiece.
- Limit the amount of time you use headsets or earpieces at high volume.
- When using the radio without a headset or earpiece, do not place the radio's speaker directly against your ear
- Use careful with the earphone maybe possible excessive sound pressure from earphones and headphones can cause hearing loss

Note: Exposure to loud noises from any source for extended periods of time may temporarily or permanently affect your hearing. The louder the radio's volume, the less time is required before your hearing could be affected. Hearing damage from loud noise is sometimes undetectable at first and can have a cumulative effect.



Approved Accessories:



- This radio meets the RF exposure guidelines when used with the Reteless accessories supplied or designated for the product. Use of other accessories may not ensure compliance with the RF exposure guidelines and may violate regulations.
- For a list of Reteless-approved accessories for your radio model, visit the following website: <http://www.Reteless.com>



Henan Eshow Electronic Commerce Co., Ltd

Add: 7/F, Sanjiang Building, No.170 Nanyang Road, Huiji District, Zhengzhou, Henan, China

EU Importer: Germany Retevis Technology GmbH

Address: Uetzenacker 29,38176 wendeburg

Facebook: facebook.com/RetelessRadio

E-mail: support@reteless.com

Web: www.reteless.com



MADE IN CHINA